

IBM Sametime 3D

Face to Face collaboration with teammates around the world -- without leaving your office... planning meetings -- without the cost and hassle of travel... get-togethers in a real world -- that isn't exactly real. The integration of virtual world meeting capabilities with existing enterprise applications gives employees a new, but yet familiar way to collaborate with their peers in a cost effective manner.

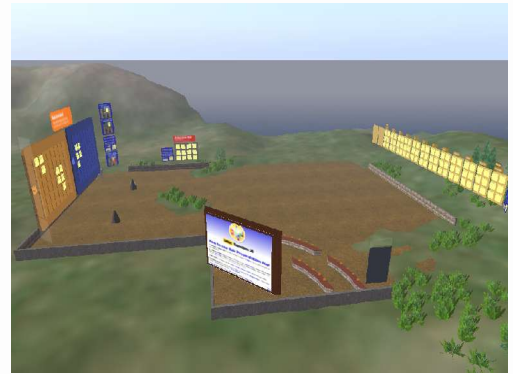
Face to face collaboration

without leaving your office



Theater

Many teams have used the sticky note brainstorming approach. Participants write ideas on the sticky notes, place them on a wall and then discuss, prioritize, modify and vote on the ideas generated during the session. This technique is used for a wide range of idea generation exercises from vision and strategy workshops to product feature prioritization to process re-design. This simple, but effective approach is easy to do in the real world, but difficult to replicate when the participants are remotely located... until now.

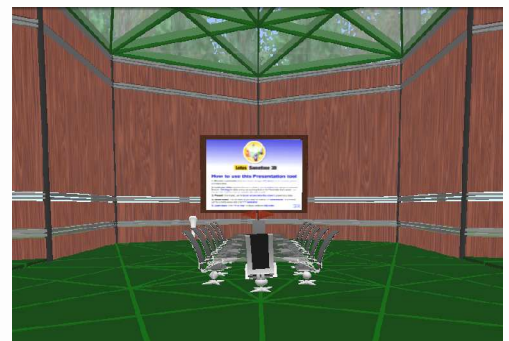


Collaboration Space

One compelling application of virtual worlds is support for collaborative brainstorming. Although a number of tools exist in both the real and the virtual world, the ability for inexperienced virtual world users to easily master collaboration in a virtual world has been a challenge. IBM Research, in partnership with Lotus, has come up with a way to simulate the experience of an actual brainstorming session using an intuitive and simple interface – the sticky note.

Simple intuitive interface

A 3D Virtual Brainstorming Tool

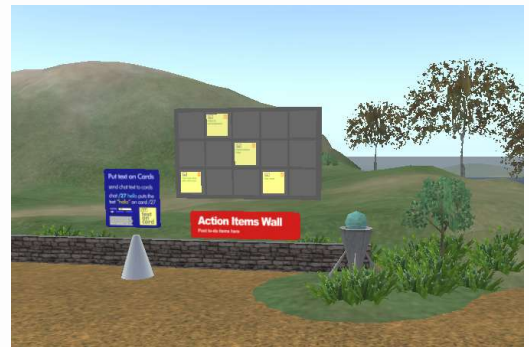
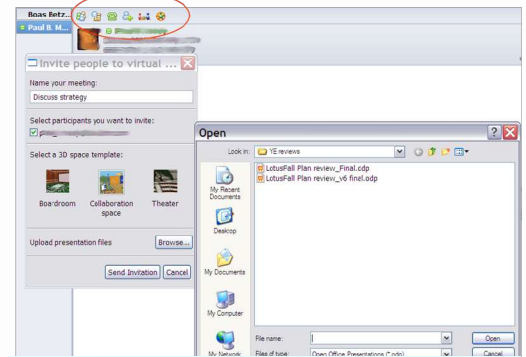
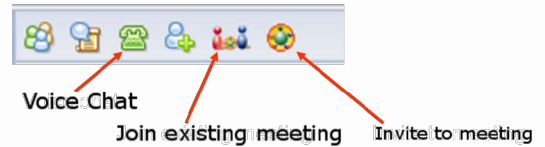


Boardroom

IBM Sametime 3D

Key features:

- Select participants from Sametime using group chat
- Voice chat through Sametime
- Choose from three meeting space templates
- Upload files for presentations
- Seating area with presentation viewer
- Generate sticky notes for use on brainstorming wall
- Move, add contents and vote on card
- Export summary of cards and voting
- Expandable planning calendar and action item wall
- "Sign in" tool
- Spaces can be used as virtual project rooms



We are currently installing our first early adopter clients. We are looking for additional clients and business partners to participate in pilots over the next few months, and IBM Software Services for Lotus is announcing a service offering for this virtual world integration asset later this quarter.

For more information, contact Karen Keeter kkeeter@us.ibm.com
Marketing executive, IBM Research, Digital Convergence
See Sametime 3D on youtube-
<http://www.youtube.com/watch?v=SfqGwKFStuw>